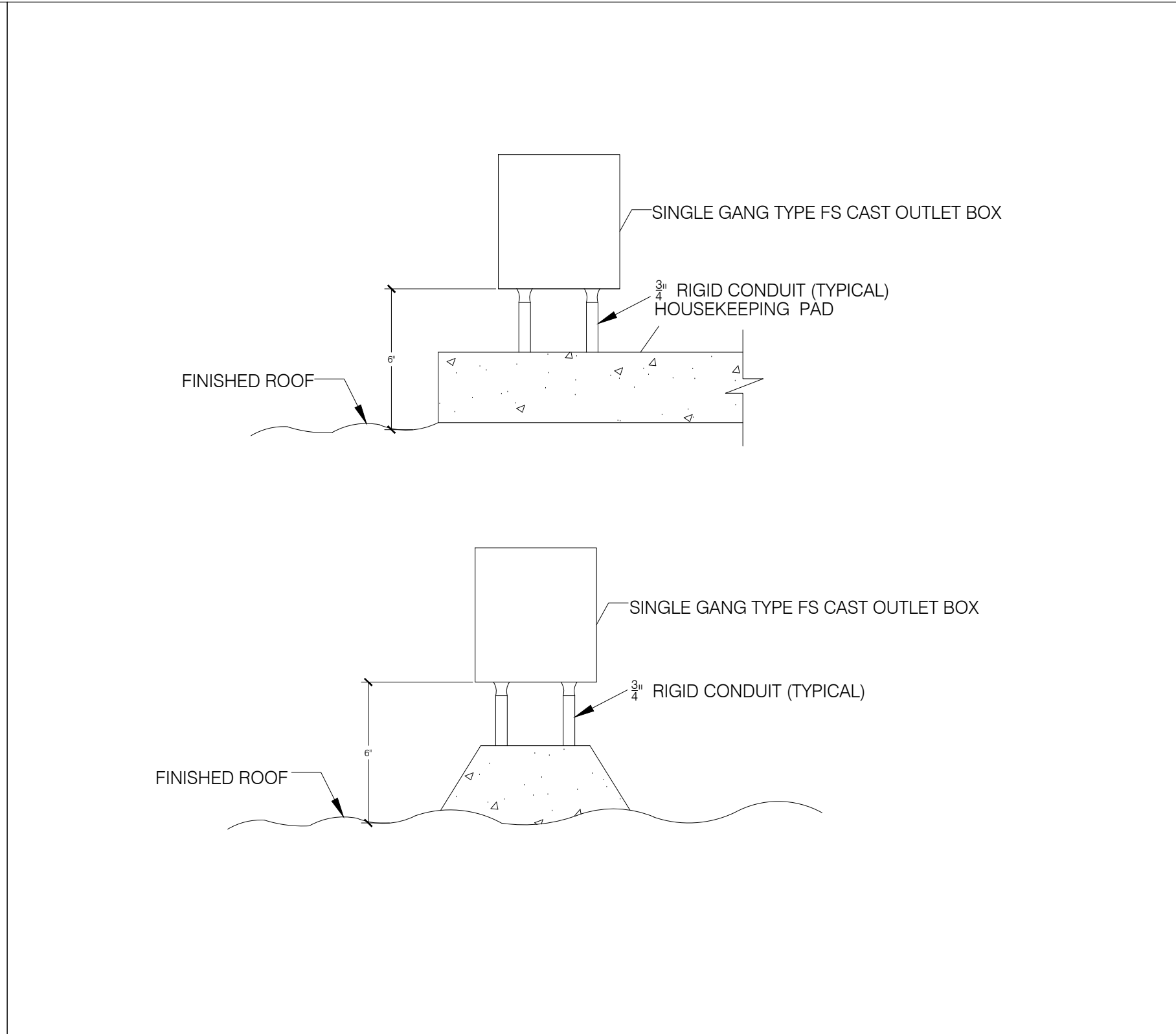
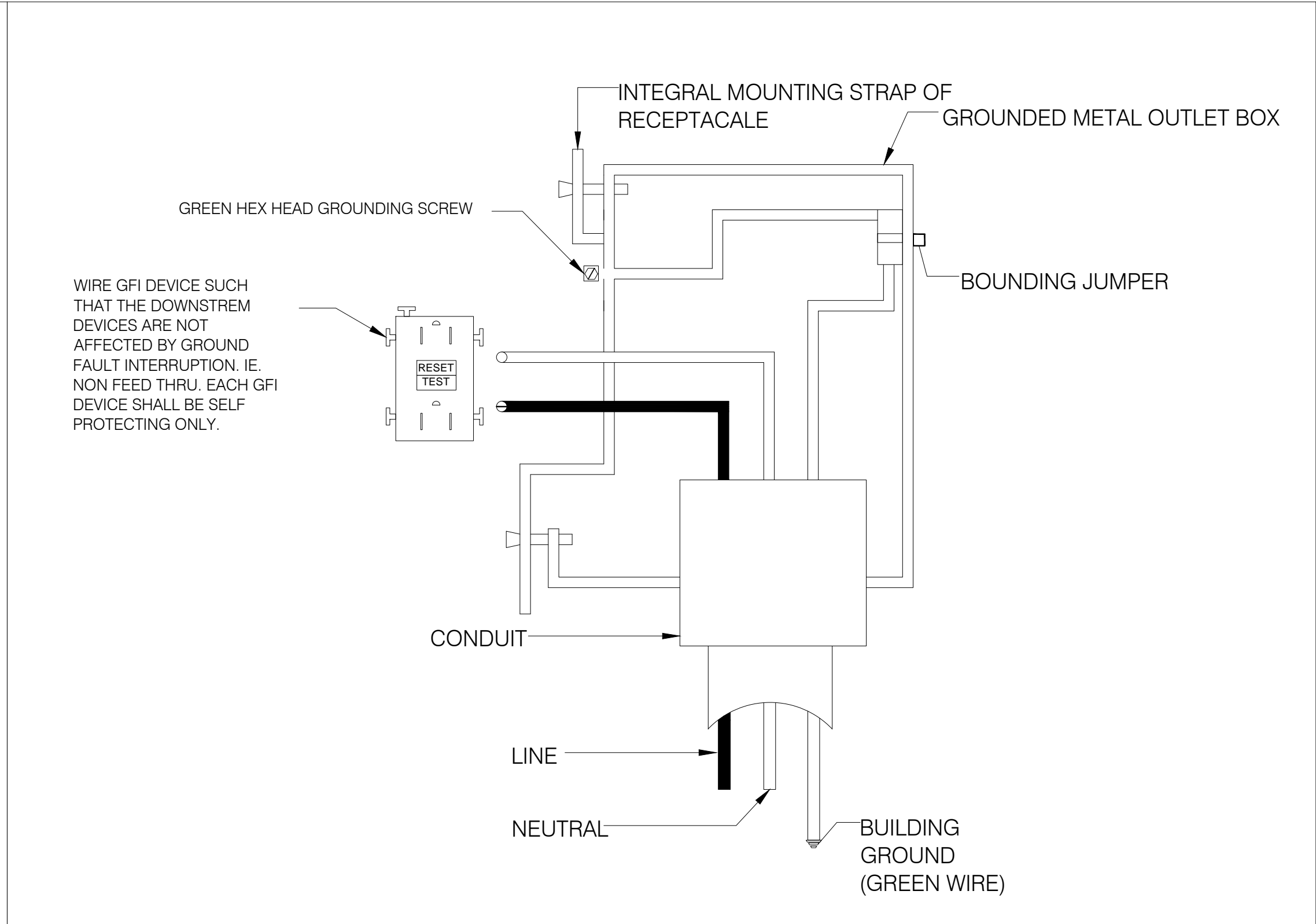


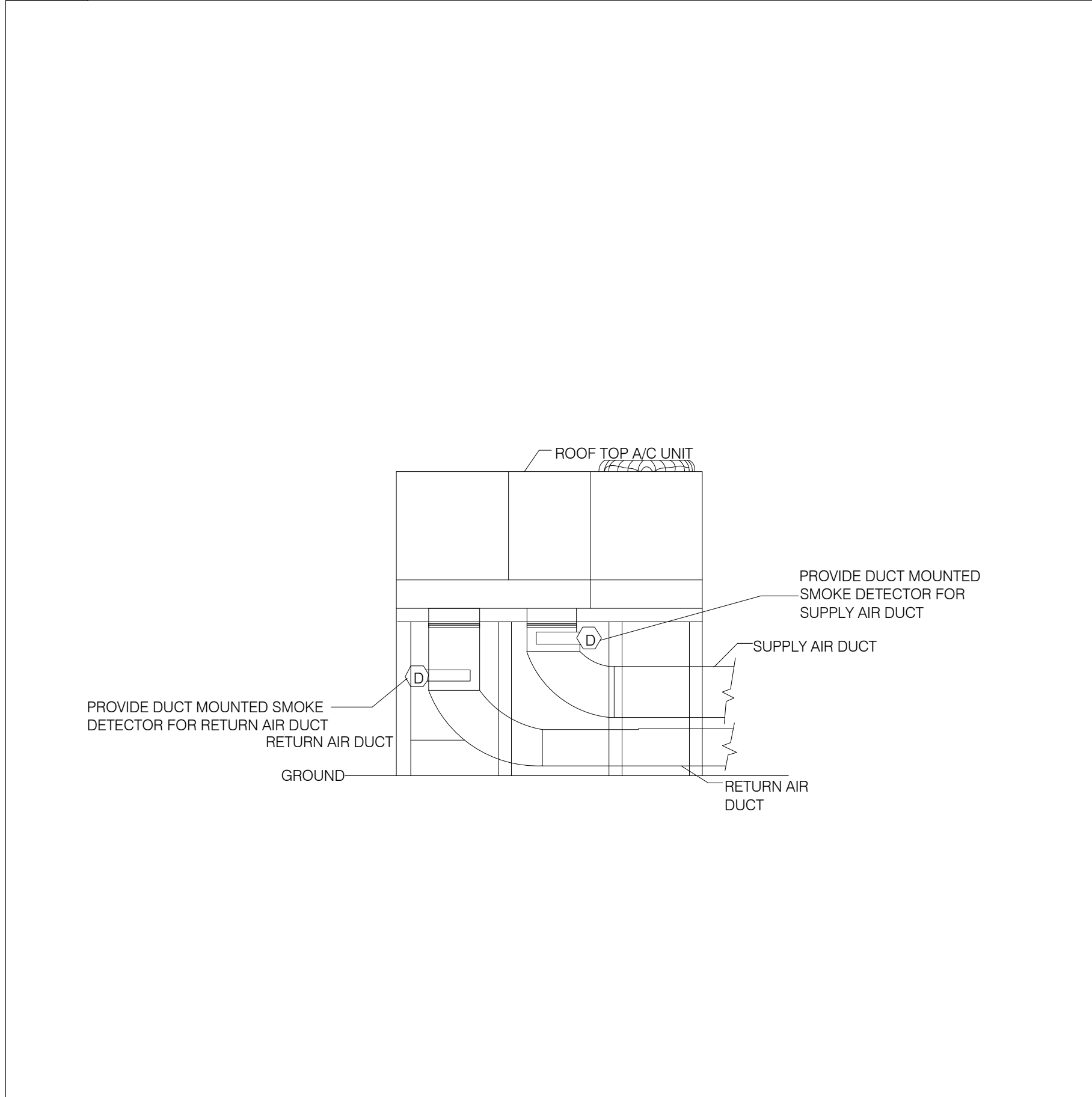
1 UNDER FLOOR RECEPTACLE DETAIL
NOT TO SCALE



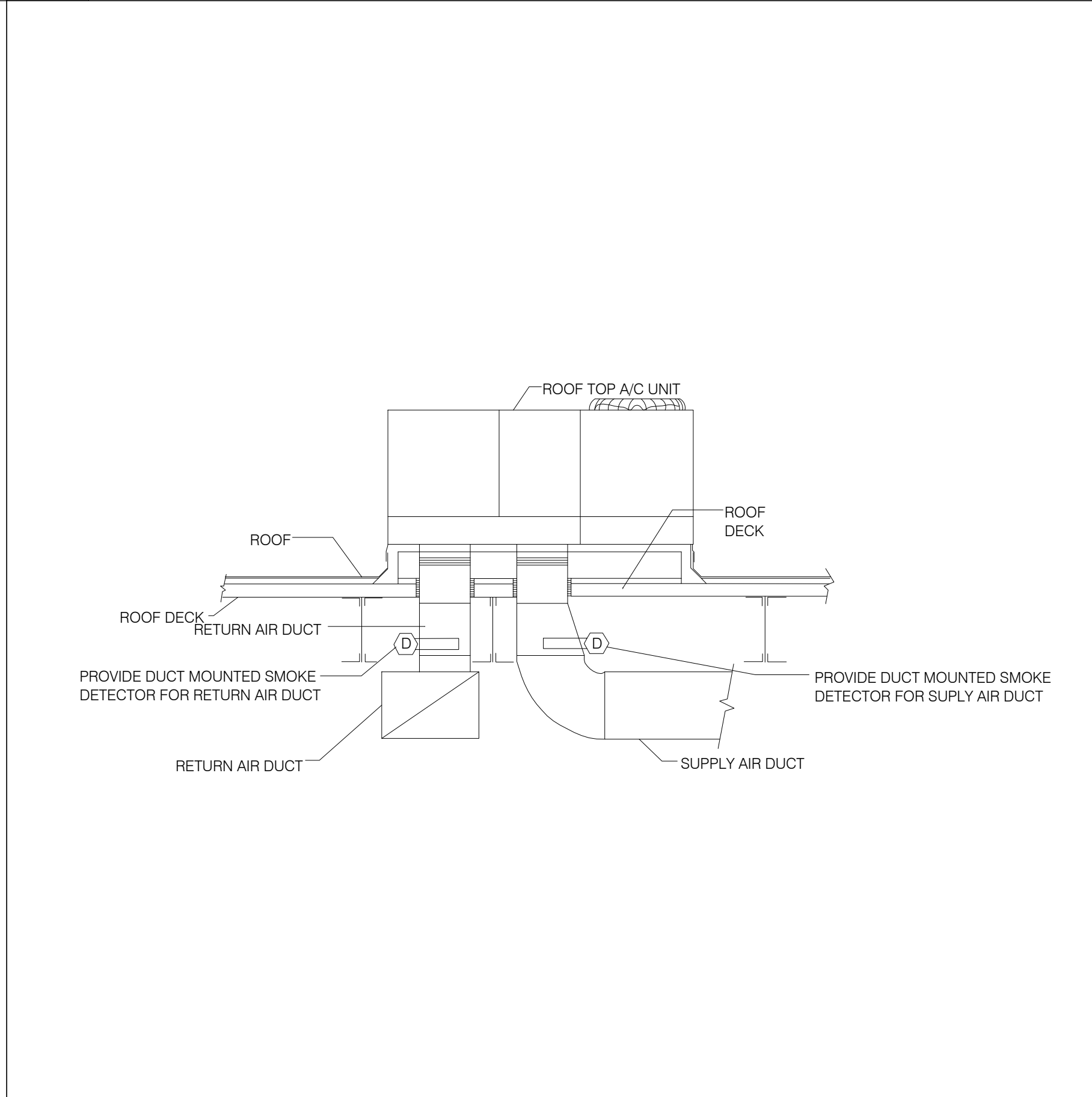
2 TYPICAL FLOOR MOUNTED RECEPTACLE
NOT TO SCALE



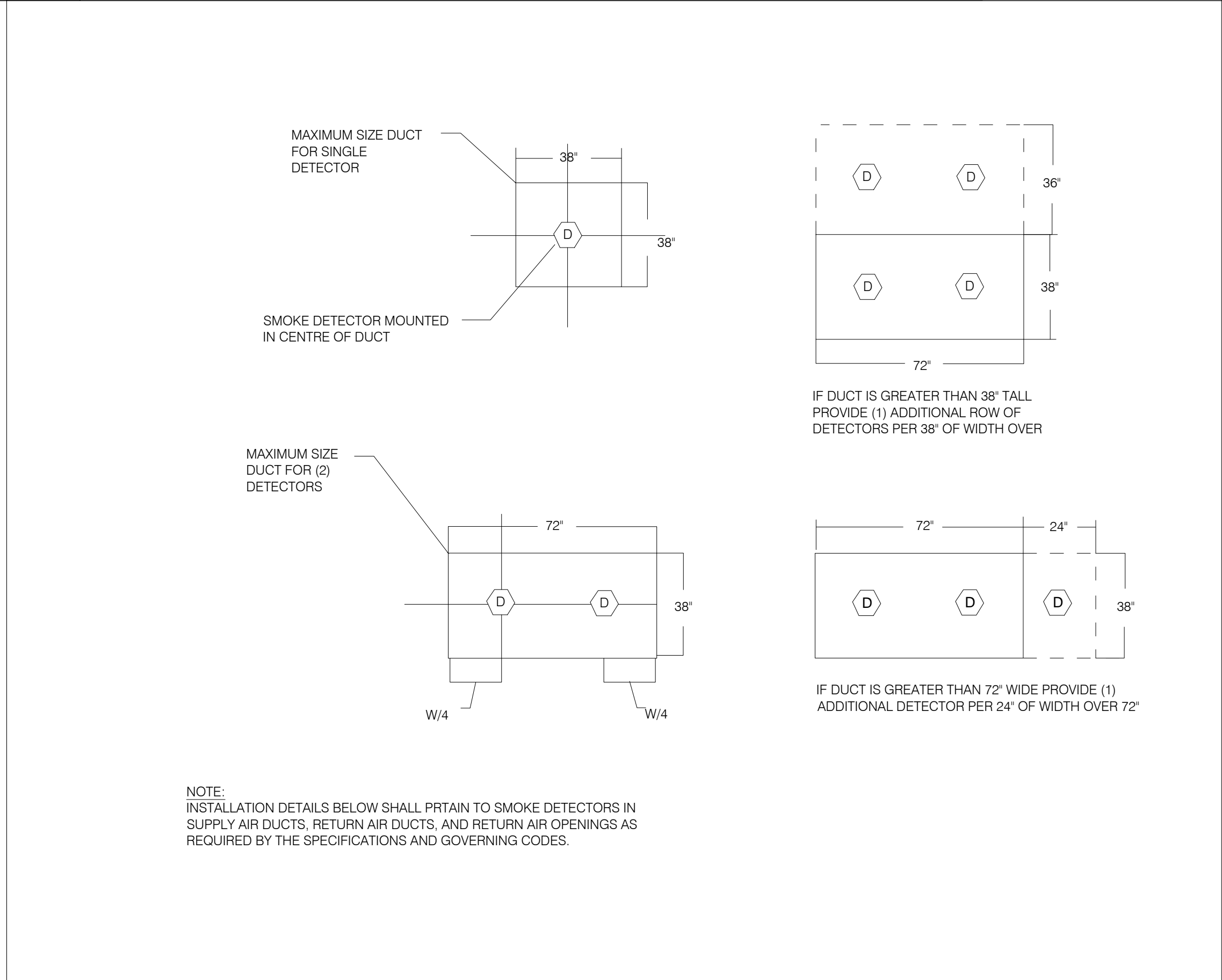
3 GFI RECEPTACLE - WIRE DIAGRAM
NOT TO SCALE



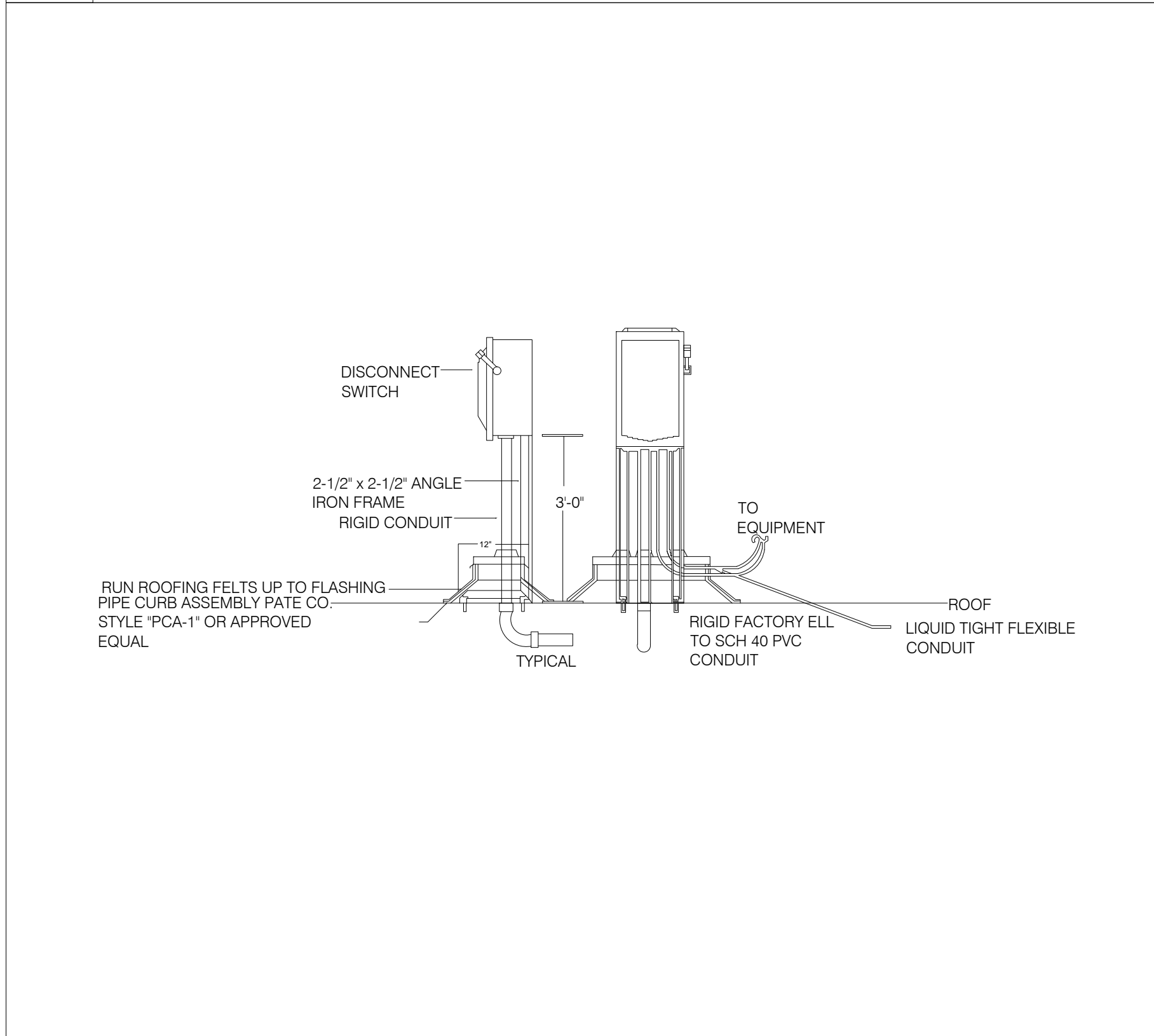
4 AIR HANDLER UNIT DUCT MOUNTED SMOKE DETECTOR DETAIL
NOT TO SCALE



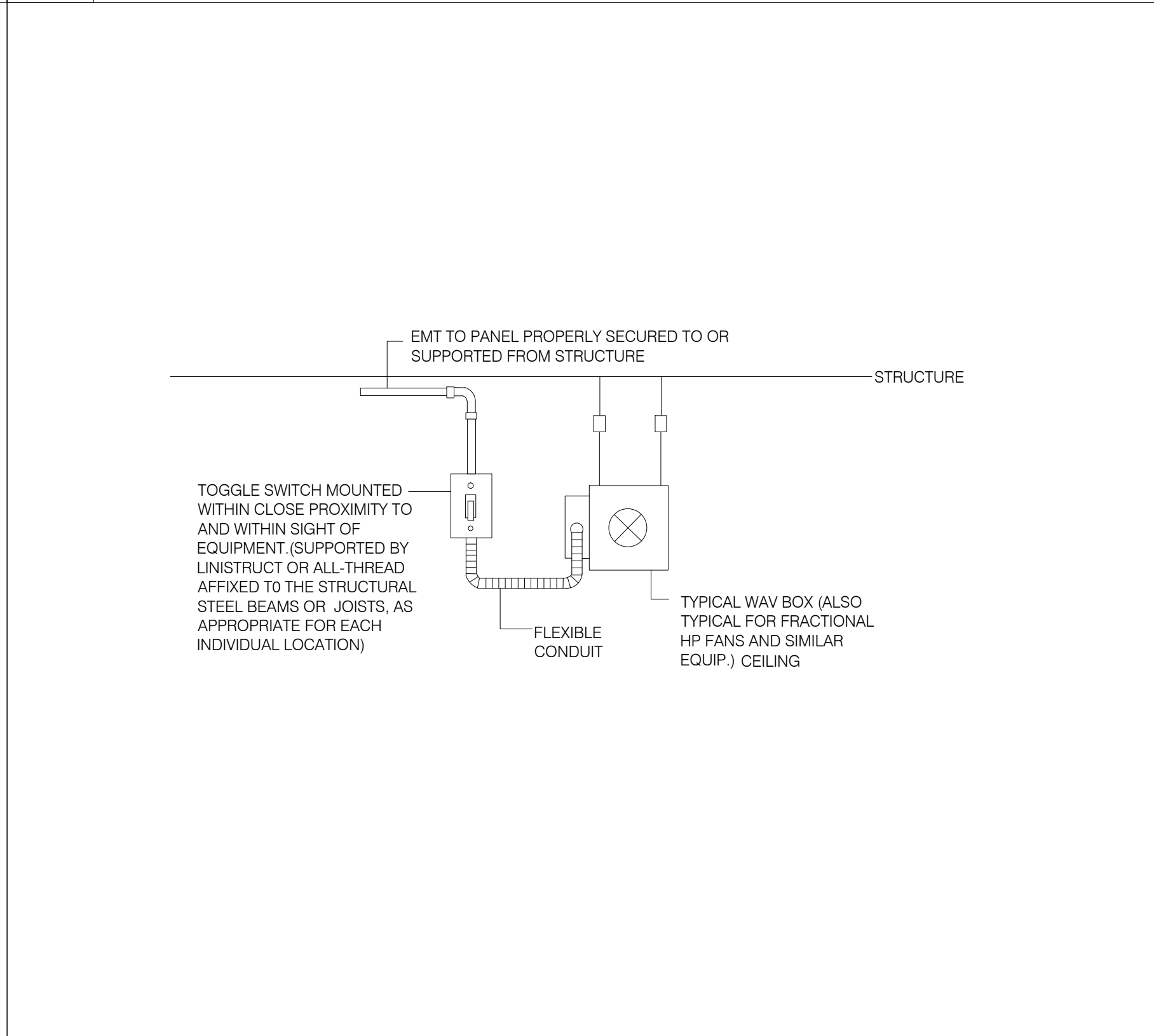
5 ROOF TOP UNIT DUCT MOUNTED SMOKE DETECTOR DETAIL
NOT TO SCALE



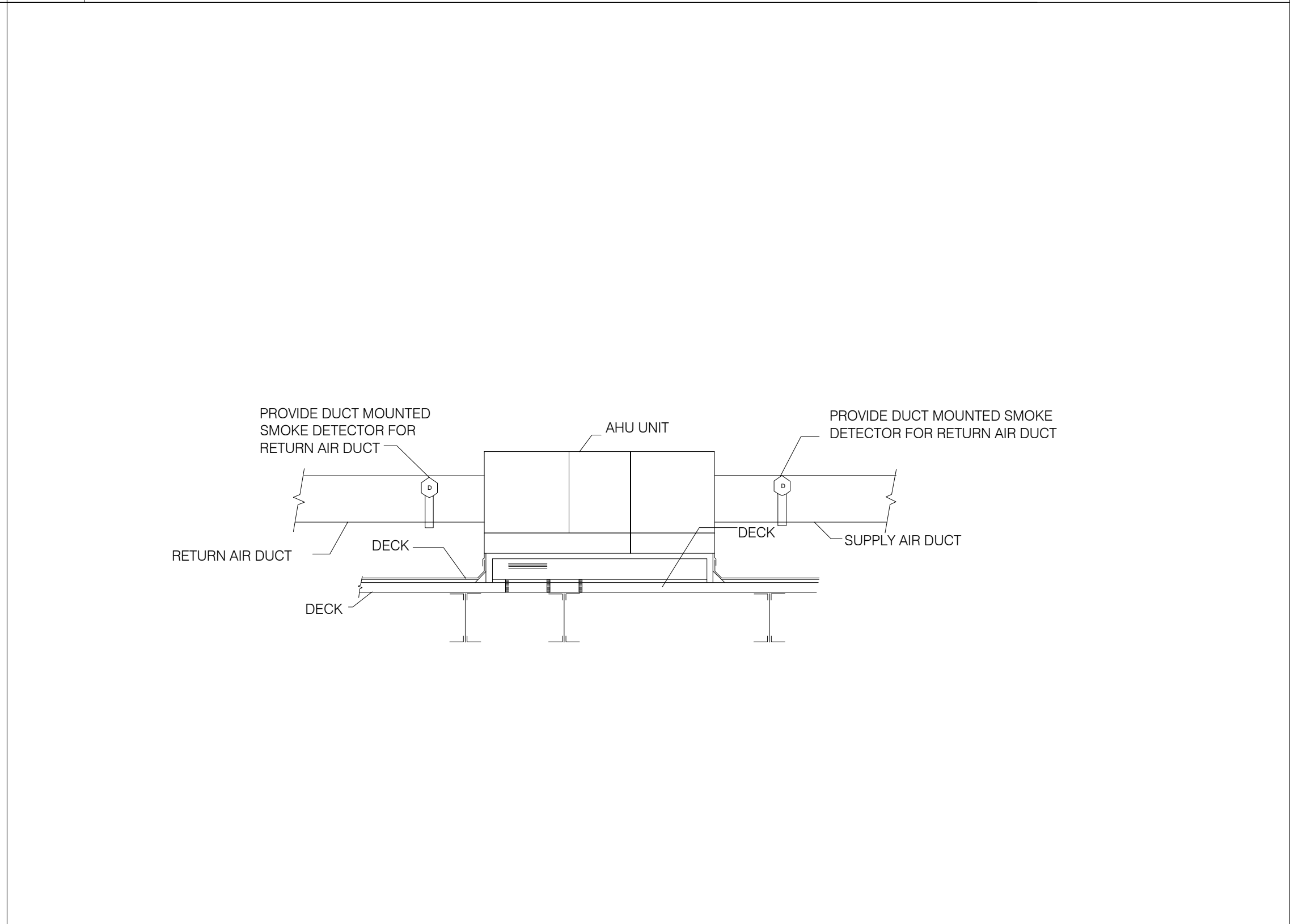
6 DUCT MOUNTED SMOKE DETECTOR DETAILS
NOT TO SCALE



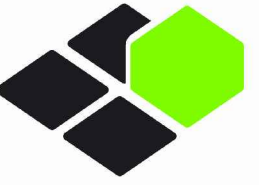
7 MOTOR DISCONNECT DETAILS
NOT TO SCALE



8 TYPICAL VAV BOX DISCONNECT
NOT TO SCALE



9 MAKE-UP AIR UNIT DUCT MOUNTED SMOKE DETECTOR DETAIL
NOT TO SCALE



BASE4

BASE4
3858 GLADES ROAD, #31
BOCA RATON, FLORIDA 33434
1.720.725.4544 www.base-4.com

SEAL



GARRY VERMAAS, PhD, PE
9011 EDGEWATER BEND
PARKLAND, FLORIDA, 33076



ISSUE:

Issued for Permit
08.05.2016

PROJECT: 16-018

Hampton Inn & Suites

New Stanton, PA 15672

OWNER:

Stanton Hospitality LLC

52 Blueberry Lane,
Grove City, PA 16127

No.	Issue Date	Project Status

DATE 2016.08.05

DRAWN BY SJ

CHECKED BY GWV

SCALE AS NOTED

PROJECT NO. B4-67-1603

SHEET NAME

ELECTRICAL DETAILS-3

SHEET NO.

E103